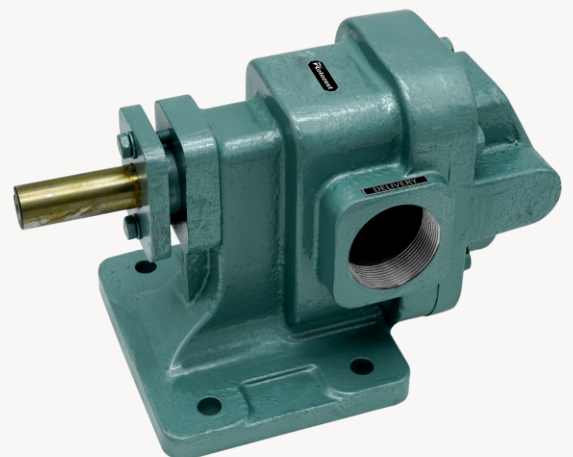




# Kotozest

## ROTARY GEAR PUMPS

*Smooth Flow, Solid Performance*



## SS Series

# STAINLESS STEEL (SS) 316L

## Rotary Gear Pump



### Features

- High-grade SS 316L construction
- Efficient handling of viscous and semi-viscous fluids
- Excellent self-priming capability
- Leak-proof design
- Compact and sturdy design
- Multiple mounting options
- High efficiency
- Suitable for handling chemicals

### Technical Specification

PUMP MODEL RZSS	PORT SIZE NPT	CAPACITY AT 1440 RPM (LPM)
RZSS 015	1/8" x 1/8"	5.0
RZSS 025	1/4" x 1/4"	8.3
RZSS 040	3/8" x 3/8"	16.6
RZSS 050	1/2" x 1/2"	25.0
RZSS 075	3/4" x 3/4"	33.3

PUMP MODEL RZSS	PORT SIZE NPT	CAPACITY AT 1440 RPM (LPM)
RZSS 100	1" x 1"	50.0
RZSS 125	1 1/4" x 1 1/4"	100.0
RZSS 150	1 1/2" x 1 1/2"	125.0
RZSS 200	2" x 2"	200.0
RZSS 250	2 1/2" x 2 1/2"	300.0



Food & Beverage Industry



Pharmaceutical Industry



Dairy Industry



Cosmetics Industry

### Applications



Painting Industry



Chemical Industry



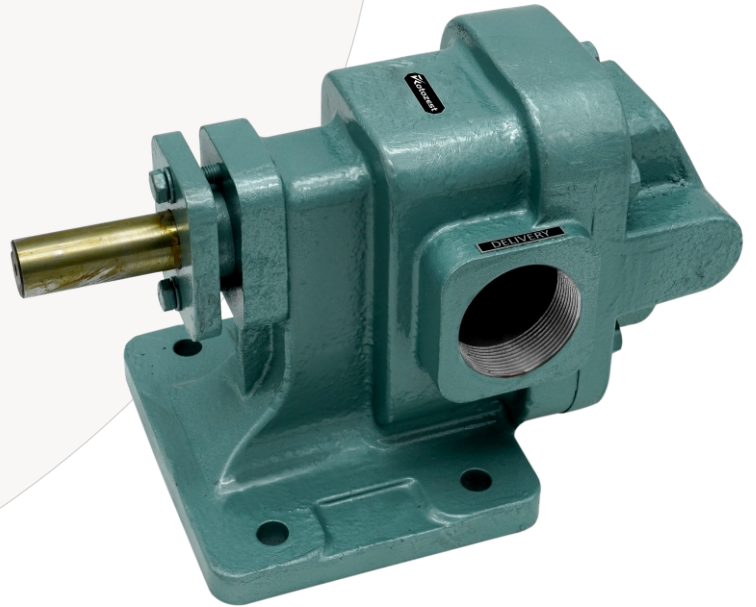
Medical Industry

CI Series

# CAST IRON (CI) Rotary Gear Pump

## Features

- High strength and durability
- Excellent wear resistance, suitable for heavy-duty applications
- Cost-effective material
- Superior thermal conductivity
- Corrosion-resistant when coated or treated
- Good machinability for customization
- Vibration damping properties
- Suitable for handling non-corrosive and semi-corrosive fluids



## Technical Specification

PUMP MODEL RZCI	PORT SIZE NPT	CAPACITY AT 1440 RPM (LPM)
RZCI 050	1/2" x 1/2"	20
RZCI 075	3/4" x 3/4"	30
RZCI 100	1" x 1"	50
RZCI 125	1 1/4" x 1 1/4"	75

PUMP MODEL RZCI	PORT SIZE NPT	CAPACITY AT 1440 RPM (LPM)
RZCI 150	1 1/2" x 1 1/2"	110
RZCI 200	2" x 2"	225
RZCI 250	2 1/2" x 2 1/2"	350
RZCI 300	3" x 3"	500



Oil and Gas Industry



Chemical Industry



Agriculture Industry



Lubrication System



Textile Industry



Painting and Varnish Industry



Sugar Industry

## Applications

# ABOUT US

Welcome to our cutting-edge pumping solutions for the food, pharmaceutical, and chemical industries. Engineered for top hygiene, precision, and durability, our pumps ensure seamless operations. Our pumps excel in compliance with industry standards, guaranteeing sterility, accurate dosing, and the safe handling of substances. Certified to ISO 9001:2015 standards, our innovative, energy-efficient, and customizable pumps deliver exceptional quality and reliability for all your processes.



## VISION

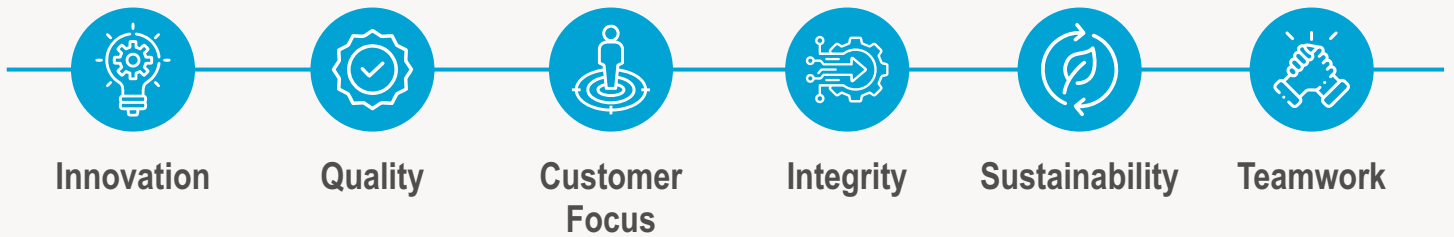
To be a globally trusted brand in rotary gear pump manufacturing, known for delivering innovative, durable, and sustainable solutions that empower industries while maintaining a commitment to quality, reliability, and environmental stewardship.



## MISSION

At Rotozest, our mission is to provide high-quality rotary gear pumps that cater to diverse industrial needs. We strive for excellence through precision engineering, exceptional customer service, and sustainable practices, ensuring long-term value for our clients.


## CORE VALUES





## ROTOZEST INDUSTRIES

Mfg : Rotary Gear Pump



 **Location:**  
11, Rudra Estate, Nr. Rameshwar Estate, B/h. Mahadev Estate,  
CTM-Ramol Road, Ramol, Ahmedabad-382449.

 **Call Now:**  
+91 9974017583  
+91 9974017582

 **Visit:**  
[www.rotozest.com](http://www.rotozest.com)

 **Email Address:**  
[info@rotozest.com](mailto:info@rotozest.com)